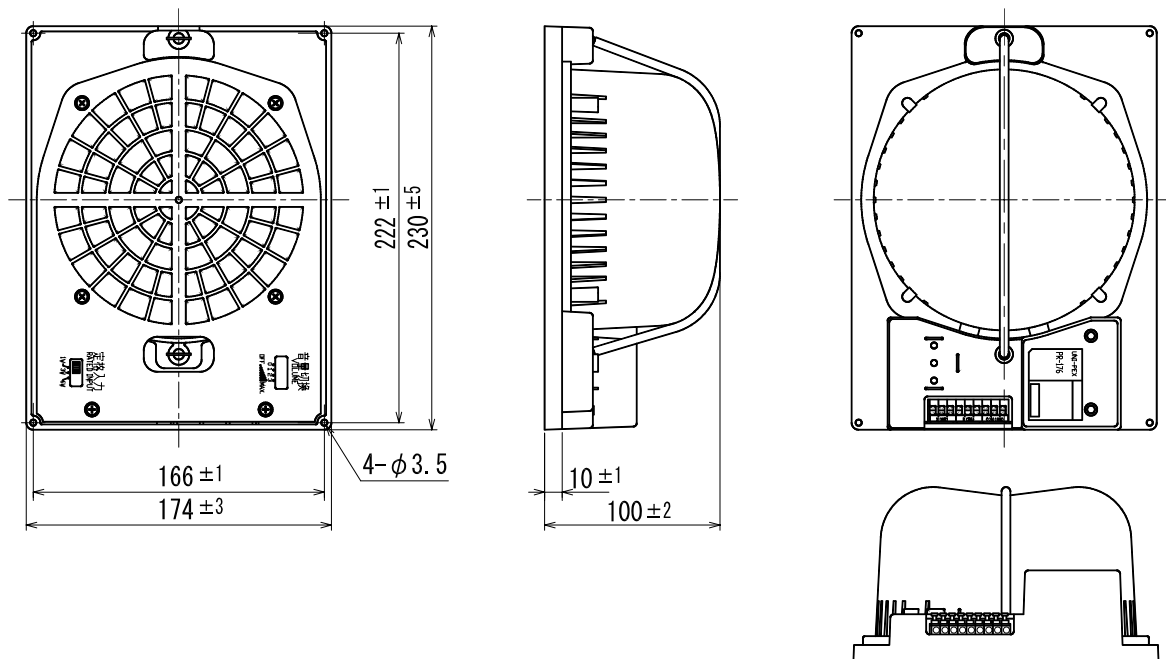


SPRING CATCH TYPE CEILING SPEAKER

PR-176

RATED INPUT	6W
RATED IMPEDANCE	1.7k Ω (6W)/3.3k Ω (3W)/10k Ω (1W) <High Impedance 100V Line>
OUTPUT SOUND LEVEL	95dB (at 1m, 1W input)
FREQUENCY RESPONSE	100Hz~12kHz (Deviation: 20dB)
SPEAKER	ϕ 160mm dynamic cone speaker (8 Ω)
FINISH	Black (ABS resin)
INSTALLING HOLE DIAM.	Φ 200mm ~ Φ 210mm
OUTSIDE DIMENSIONS	Square: 230mm \times 174mm Height: 100mm
MASS	Approx. 830g
OPTION	Speaker panel Panel with jersey netting: PL-230W(White), PL-460W(White), PL-230LG(Light gray), Panel with punching net: PL-230P (Silver), PL-230PW (White) Panel with expand metal: PL-233W (White) Panel with louver: PL-230R (White)



UNIT: mm

BUSINESS

JH01

Subject to change for improvement without notice.

製造元 日本電音株式会社 販売元 ユニペックス株式会社